

XERION 12

- Max. output¹: 585-653 hp
- Number of cylinders: 6
- Transmission type: CMATIC



AXOS 200

Max. output¹
Number of cylinders
Transmission type



92-103 hp
4
Manual

Front loader lift arms



Lift capacity over entire lifting height
Max. lifting height

1800-2910 kg
3500-4600 mm

ELIOS 300

Max. output¹
Number of cylinders
Transmission type



85-103 hp
4
Manual

ELIOS 200

Max. output¹
Number of cylinders
Transmission type



75-103 hp
4
Manual

NEXOS COMFORT

Max. output¹
Number of cylinders
Transmission type



85-120 hp
4
Manual

NEXOS TREND

Max. output¹
Number of cylinders
Transmission type



75-103 hp
4
Manual

XERION 5000-4200

Max. output¹
Number of cylinders
Transmission type



462-530 hp
6
CMATIC

AXION 900

Max. output¹
Number of cylinders
Transmission type



325-445 hp
6
CMATIC

AXION 800

Max. output¹
Number of cylinders
Transmission type



205-295 hp
6
CMATIC / Manual

ARION 600-500

Max. output¹
Number of cylinders
Transmission type



125-205 hp
4-6
CMATIC / Manual

ARION 400

Max. output¹
Number of cylinders
Transmission type



90-155 hp
4
Manual

JAGUAR 900

Max. output¹
Working width
Chopping cylinder



462-925 hp
2.62-8.93 m
V-FLEX / V-MAX

JAGUAR 800

Max. output¹
Working width
Chopping cylinder



435-653 hp
2.62-7.60 m
V-CLASSIC

JAGUAR 900 TERRA TRAC

- Max. output¹: 653-925 hp
- Working width: 2.62-8.93 m
- Knife drum: V-FLEX / V-MAX



QUADRANT



Square balers
– Bale dimensions:
1.20 x 0.90 m
1.20 x 0.70 m
0.80 x 0.50 m

VARIANT

Round balers with variable chamber
Bale chamber diameter



0.90-1.80 m

ROLLANT

Round balers with fixed chamber
Bale chamber diameter



1.25 m

LEXION 6000 / 5000

Max. output¹
Grain tank
Threshing drum width
Secondary separation



313-507 hp
9000-13500 l
1420-1700 mm
5 / 6-walker

TRION 700

Max. output¹
Grain tank
Threshing drum width
Secondary separation



367-435 hp
10500-12000 l
1420 mm
ROTO PLUS

Maize pickers
ROVIO 4
6-12 rows



LEXION 8000 / 7000

- Max. output¹: 408-790 hp
- Grain tank: 10000-18000 l
- Threshing drum width: 1420-1700 mm
- Secondary separation: ROTO PLUS



TRION 600/500

Max. output¹
Grain tank
Threshing drum width
Secondary separation



258-408 hp
8000-12000 l
1420-1700 mm
5 / 6-walker

EVION 400

Max. output¹
Grain tank
Threshing drum width
Secondary separation



205-258 hp
5600-8000 l
1420 mm
5-walker

Pick-up front attachments
SWATH UP
4.77 m



Auger cutterbars

VARIO
CERIO
MAXIFLEX
Folding cutterbars
Standard cutterbars



4.95-13.97 m
5.56-9.22 m
5.56-9.22 m
4.55-5.46 m
3.71-4.92 m

Draper cutterbars

CONVIO
7.77-15.24 m



Sunflower front attachments

SUNSPPEED
8-16 rows



LINER

LINER four-rotor swathers
Working width



9.30-15.00 m

LINER dual-rotor swathers with central swathing
Working width



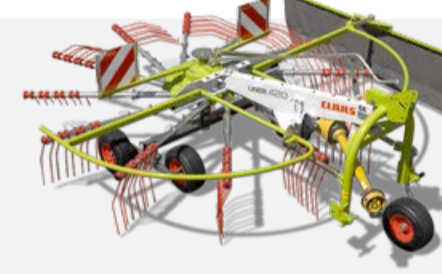
6.20-10.00 m

LINER dual-rotor swathers with side swathing
Working width



3.50-8.40 m

LINER single-rotor swathers
Working width



3.70-4.80 m



ORBIS
Working width

4.48-8.93 m



DIRECT DISC
Working width

5.13-5.96 m



PICK UP
Working width

2.62-3.60 m

DISCO

DISCO large-scale mowers
– Working width: 8.10-10.70 m



DISCO front mowers
Working width



3.00-3.40 m

DISCO rear mowers
Working width



2.20-4.20 m

VOLTO

VOLTO trailed tedders
Working width



7.70-15.10 m

VOLTO mounted tedders
Working width



4.50-10.70 m

TORION

Wheel loaders, large series
Max. output¹
Operating weight
Tip load fully articulated



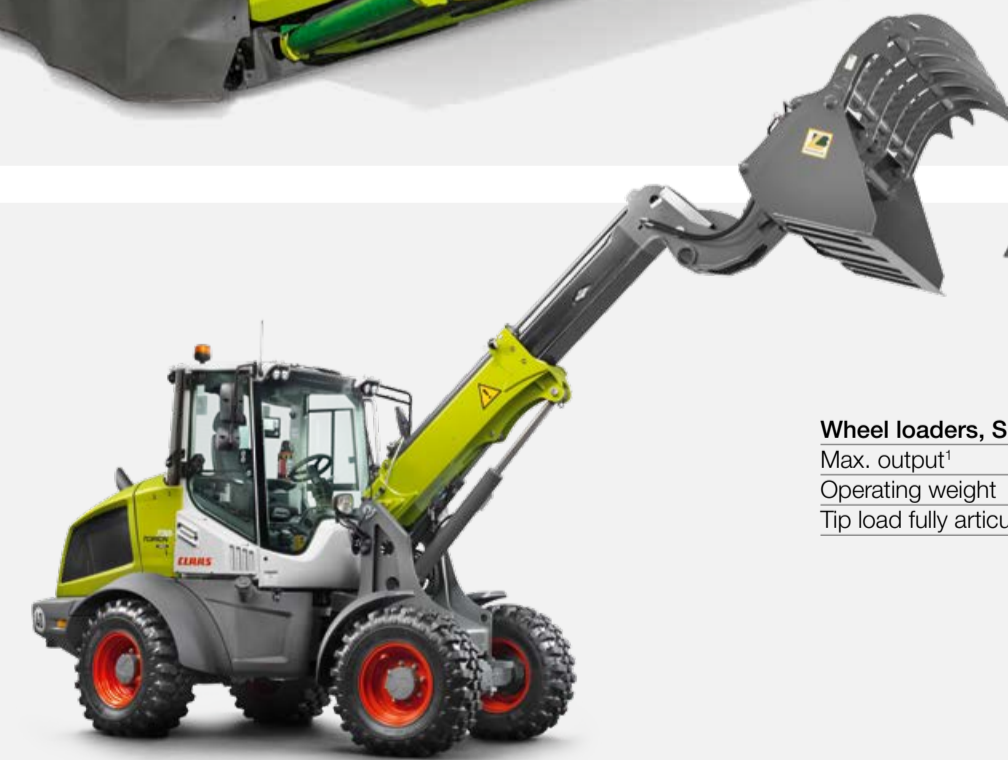
222-249 hp
19000-20300 kg
9500-12700 kg

Wheel loaders, medium series
Max. output¹
Operating weight
Tip load fully articulated



158-252 hp
13570-16000 kg
6100-10250 kg

SINUS telehandlers
Max. output¹
Operating weight
Tip load fully articulated



73 hp
7000 kg
3800 kg

Wheel loaders, SINUS series
Max. output¹
Operating weight
Tip load fully articulated



73-103 hp
4600-5700 kg
3750-5575 kg

SCORPION 960-733

Telehandlers
– Max. output¹:
143-156 hp
– Max. load capacity:
3300-6000 kg
– Max. lift height:
6.13-9.75 m



¹ Compliant with ECE R 120

CLAAS continually develops its products to meet customer requirements. This means that all products are subject to change without notice. All descriptions and specifications in this publication should be considered approximate and may include optional equipment that is not part of the standard specifications. This publication is designed for worldwide use and features machines that are not available in every market. Please refer to your CLAAS dealership's price list for details on availability and local specifications. Where not otherwise indicated, performance is designed to meet the ECE R120 / ISO TR 14396 standard.

