



Round balers

ROLLANT



The world of CLAAS.

You need to reap the rewards for all that hard work. And to get the job done, day after day out in the fields, down the long straights, turning in the headland or working on steep slopes, you also need some support along the way – preferably from a partner you know you can trust.

Tackling the task, and seeing it through to the end: that's your approach, and it's also what drives us – because the CLAAS ROLLANT is not only an outstanding round baler, but also the player you need on your team. It offers you ease of operation, high productivity, and above all, total reliability. In short, a great partnership, for a great result.




ROLLANT from CLAAS	4
Overview	6
ROLLANT 630 RC UNIWRAP	8
Durability	10
Output	12
Easy operation	14
Pick-up	16
Feed systems	20
ROTO CUT Heavy Duty	22
Bale chamber	24
MAXIMUM PRESSURE SYSTEM	26
Baling	28
ROLLANT 520	32
ROLLANT 540	34
Operation	36
CEMIS 700	38
CLAAS Service & Parts	42
Specifications	44

Since the introduction of the first ROLLANT in 1976, CLAAS has continued to develop the series. The ROLLANT has made a name for itself all over the world. It has a proven track record of baling everything our customers require: straw, hay, silage and even maize. Even after more than 45 years on the market, CLAAS engineers have succeeded in further improving the quality and reliability of these balers – and these concepts are the cornerstones of our ROLLANT series.



Discover the new ROLLANT 630 RC UNIWRAP.



Scan me.

A wide range of products to suit every need.

ROLLANT 520. Simple.



ROLLANT 520.

- ROTO FEED or ROTO CUT
- 14 knives
- Hydraulic ROTO REVERSE
- Net wrapping or twine tying
- Up to 150 bar baling pressure
- Pick-up with baffle plate or roller crop press
- Optional: MPS II

ROLLANT 540. Robust.



ROLLANT 540.

- ROTO CUT Heavy Duty
- 15 knives
- Automatically lowering PRO cutting frame
- Net wrapping or twine tying
- Up to 180 bar baling pressure
- Automatic tailgate (COMFORT)
- Pick-up with roller crop press
- Optional: MPS II

ROLLANT 630. Powerful.



ROLLANT 630 RC UNIWRAP.

- ROTO CUT Heavy Duty
- 17 or 25 knives
- Automatically lowering PRO cutting frame
- Net and/or film wrapping
- Up to 180 bar baling pressure
- Automatic tailgate (COMFORT)
- Optional: MPS PLUS

ROLLANT 630 RC UNIWRAP.

Let's talk about reliability!

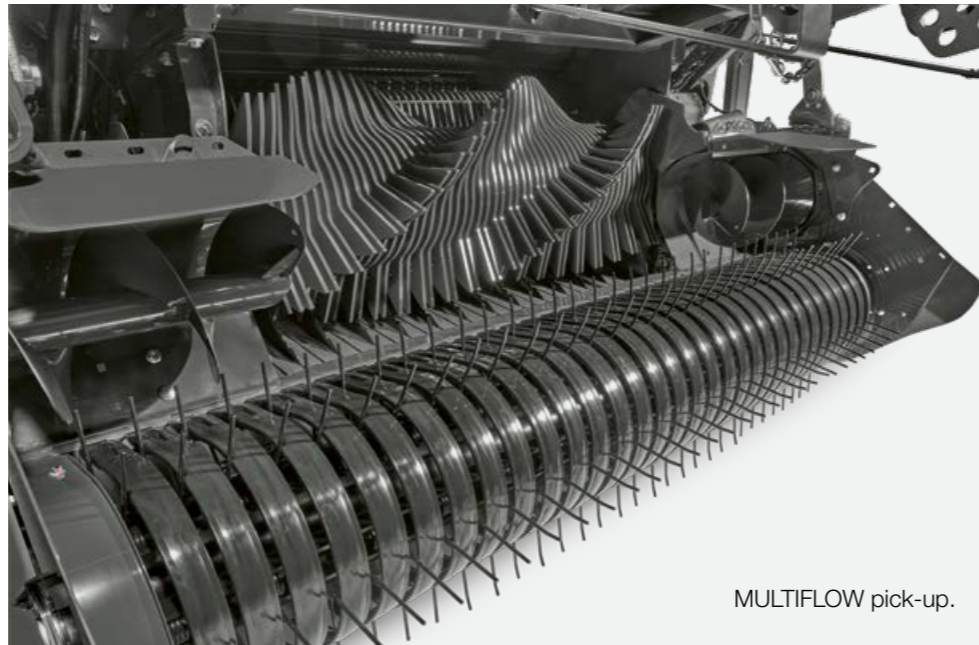


Durability.

The ROLLANT 630 RC UNIWRAP features a completely new drive system and combines durability with efficiency. Equipped with the new MULTIFLOW pick-up, its design ensures excellent pick-up and a constant crop flow, even at high speeds.

Durable and robust.

- New standard pick-up with four tine bars equipped with a quick-release plastic stripper that can be easily removed and with a new cam track that reduces power requirements by 20%.
- New HD pick-up with five tine bars for better raking quality and a 20% higher pick-up capacity



MULTIFLOW pick-up.



Lowerable PRO cutting frame. For more power and fewer blockages.



Performance.

When it comes to baling, every moment counts. That's why our machine is designed to meet this challenge and deliver optimum results even in the most demanding conditions. Full capacity utilisation.



User-friendliness.

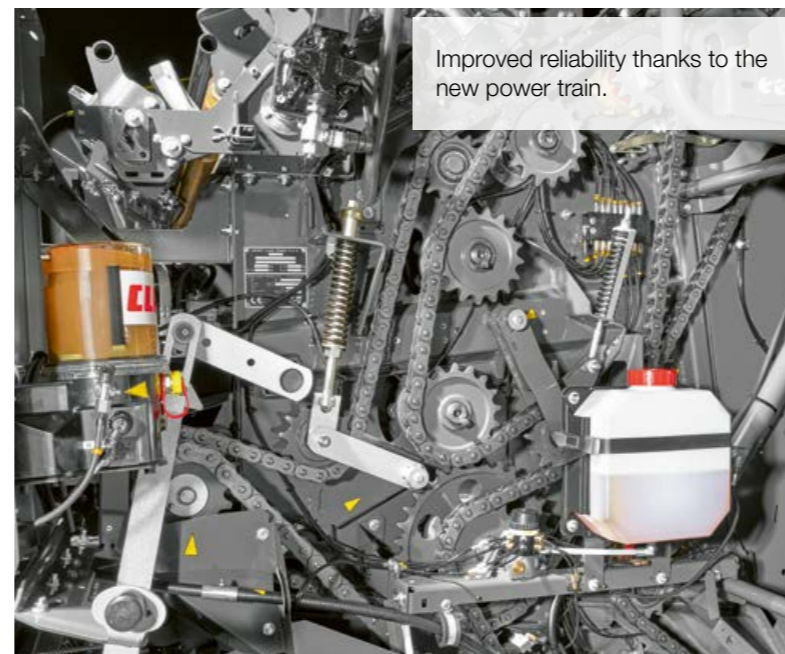
The new ROLLANT 630 RC UNIWRAP offers a high level of operating and maintenance comfort, whatever the application. The new interface makes it easier to set and select parameters so you can bale in all conditions.

Easy to use.

- The 7" CEMIS 700 is intuitive to operate via a touchscreen, keys or a rotary pushbutton
- New CEMIS 100 as rear terminal for quick access to menus
- New automatic central lubrication system for longer parts life and quick and easy machine maintenance



Single axle with large tyre sizes for maximum soil protection.



Improved reliability thanks to the new power train.



Lubrication made easy.



MAXIMUM PRESSURE SYSTEM (MPS): highly compacted bales at high driving speeds.



Film or net wrapping.



14 rolls of wrapping film on the machine.



CEMIS 700. Access to all key functions directly from the driver's seat.

Designed for durability.

Bale after bale, optimally compacted and rock hard. The reliability and durability of the ROLLANT UNIWRAP has impressed farmers all over the world for decades. We continue to develop this baler to give you better and better results.

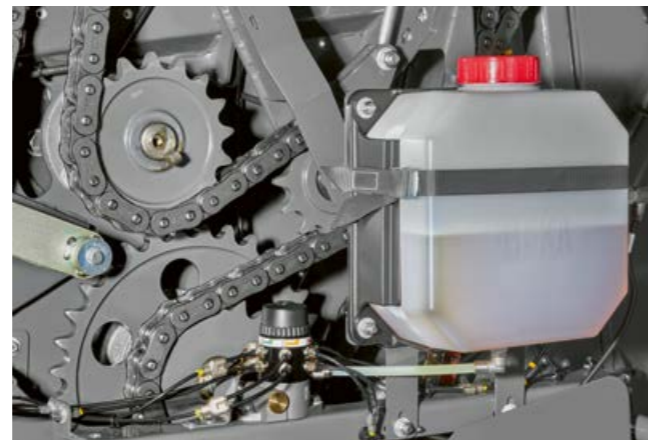
Key features:

- New, stronger chains for a longer service life
- 14% larger oil reservoir for permanent chain lubrication
- More precise chain guide for less wear
- Robust tailgate suspension made of even tougher steel
- Larger ground clearance for bale transfer



New chain kinematics.

All components exposed to intense loads have been reinforced. The chains are longer and stronger, and the sprockets are larger. This means less stress on the chain links, a longer service life and lower maintenance costs.



Constant chain lubrication.

A pump with adjustable oil flow for each chain and a larger 7.2-l oil tank provide automatic, continuous chain lubrication for approximately 14 working hours. This extends the service life of all wear parts.



Efficient chain tensioner.

Reinforced chain tensioners and a dual-guide chain tensioner wheel guide the chain precisely, preventing it from slipping or jamming. This reduces wear. The axles and bearings are designed for excellent stability.



Greater ground clearance.

A new, robust transfer arm provides smooth bale transfer thanks to end-position damping and increased ground clearance, as it only has two positions. The tailgate frame is made from even harder steel for greater reliability.



Optimised for maximum performance.

Hay, straw, silage or hemp – all ROLLANT models are characterised by one thing above all: their outstanding performance in the field. Even at high driving speeds, they produce bales of superior quality.

Key features:

- Only 23 seconds baling time per bale with 6 layers
- Perfect compaction with MAXIMUM PRESSURE SYSTEM
- High forage quality thanks to ROTO CUT with 17 or 25 knives
- Reduced film consumption with the new hydraulic brake
- Space for 14 film rolls on the machine



Optimal compaction.

Thanks to the steel roller bale chamber with MAXIMUM PRESSURE SYSTEM, the bale rotates right from the start and is compacted from a diameter of as little as 90 cm. With the pressure freely adjustable from 60 to 120 bar, the end result is perfectly compacted, high-density bales – even at high throughputs.



Short cut.

The ROTO CUT feed system with 17 or 25 knives delivers top quality short-cut forage at up to 13,800 cuts per minute. You can switch the knife groups conveniently from the cab.



High driving safety.

The new tread pattern promotes self-cleaning, reduces wheel slip and provides better grip on slopes. The large 560/60 R 22.5 and 600/55 R 26.5 tyres protect the ground.



Reduced film consumption.

The new hydraulic brake allows the film to be stretched even more during wrapping. This reduces film consumption by up to 15%. Moreover, bales can be compacted up to 6 cm smaller in diameter.



Designed for ease of use.

Even if you love your work, it's best to get it done efficiently. The simple, intuitive operation of the ROLLANT UNIWRAP ensures that every move you make goes like clockwork. To make your work even easier, we have improved the operating comfort even further.

Key features:

- New CEMIS 700 interface for faster control
- 10 minutes of time saved per day thanks to extended central lubrication
- Faster coupling and uncoupling thanks to clear markings
- Even better access to the chamber and prestretchers



Intuitive operation.

The new touchscreen of the CEMIS 700 and the ISOBUS terminal gives you even faster access to the menus. All functions are self-explanatory. The new CEMIS 100 is available as a rear-mounted terminal.



Time-saving lubrication.

The automatic central lubrication system supplies twelve more lubrication points than before. This saves up to ten minutes a day when greasing the machine. The lubricant reservoir can be filled more quickly and the grease gun is easier to connect.



Easy coupling.

The new parking position for the hoses and clearly marked couplings allow the baler to be coupled and uncoupled quickly. Folding guide wheels are available for the pick-up as an option.



Good accessibility.

The wrapping/tying system, bale chamber and pre-stretcher are easily accessible. You only need one tool to change the pre-stretch from 67% to 82%. With 82% pre-stretch, you save over 10% film.

Performance has a new name. MULTIFLOW pick-up.

In 1934, CLAAS revolutionised the way crops were harvested in Europe. Straw and hay no longer had to be manually loaded onto wagons from the field. The CLAAS pick-up did this mechanically in a single pass. Since then, CLAAS has continued to develop the pick-up. The latest generation is even more powerful and efficient.



At a glance.

- The 2.10-m working width ensures a huge pick-up capacity.
- Four or five (HD) rows of tines leave a thoroughly cleared field.
- The new cam track reduces wear by 20%.
- New chain tensioners and optimised lubrication reduce wear.

Significantly longer service life.

The shaft has been reinforced and the cam track updated. The new cam track reduces rollover forces by 20%, saving fuel. The newly developed lubrication system lubricates the chains continuously with brushes instead of applying individual drops of oil as previously. The chain is tensioned by a spring and is always in precise contact. All this reduces wear and doubles the service life of the MULTIFLOW pick-up compared to the previous model.

Greater pick-up capacity.

With a working width of 2.10 m, the pick-up collects even the widest swaths. The new standard pick-up is equipped with four tine bars, while the new HD pick-up has five. The spring tines are positioned close together and the flexible frame follows the ground perfectly. As a result, the new MULTIFLOW pick-up has enormous pick-up capacity. It leaves behind a thoroughly cleared field in all operating conditions.

Good accessibility.

All pick-up components are easily accessible thanks to the new side covers. The plastic stripper brackets are easy to remove and replace. When maintenance is required, the double roller crop press can be opened quickly and effortlessly without tools. This saves time during cleaning and maintenance.

Smooth crop flow.

A single or double roller crop press ensures an optimum crop flow. The forward position of the pick-up allows you to monitor the crop flow directly from the cab. This makes it easier to adjust the speed to suit the swath size and enables you to control the crop flow optimally to prevent blockages in the baler.

Ensures a great start.
The pick-up.



Single or double roller crop press –
for higher performance.

What benefits does a forward-mounted roller crop press offer? In short, it presses the crop down, speeds up the crop flow and actively conveys it to the rotor. It also ensures that the bale chamber is filled evenly, thus creating perfectly round bales. Having the pick-up close to the rotor ensures optimum crop transfer. This combination of conveyor augers and roller crop press makes your work easier, particularly when working in uneven silage swaths.

2.10-m working width –
for total work performance.

The pick-up of the ROLLANT has a working width of 2.10 m and picks up even very wide swaths. A speed of 140 rpm ensures an even crop flow without forage soiling. The short baffle plate guides the crop flow reliably to the rotor even when baling small or irregular swaths. The pick-up is equipped with flexible spring steel tines that have proven their worth even in the toughest conditions. The tines are closely spaced to leave a cleanly raked field.

Another benefit is that the operator can monitor the crop flow straight from the cab, as the pick-up is positioned clearly visible at the front. This makes it easier for you to adjust speeds to swath sizes and enables you to control the crop flow optimally to prevent baler blockages.



Cam-controlled pick-up for optimum
crop flow.

The cam-controlled pick-up adjusts to any ground contours, even at high working speeds and while negotiating curves. Proven technology from other CLAAS products (JAGUAR, QUADRANT).

Generously dimensioned lateral stub augers,
for tightly packed bale edges.

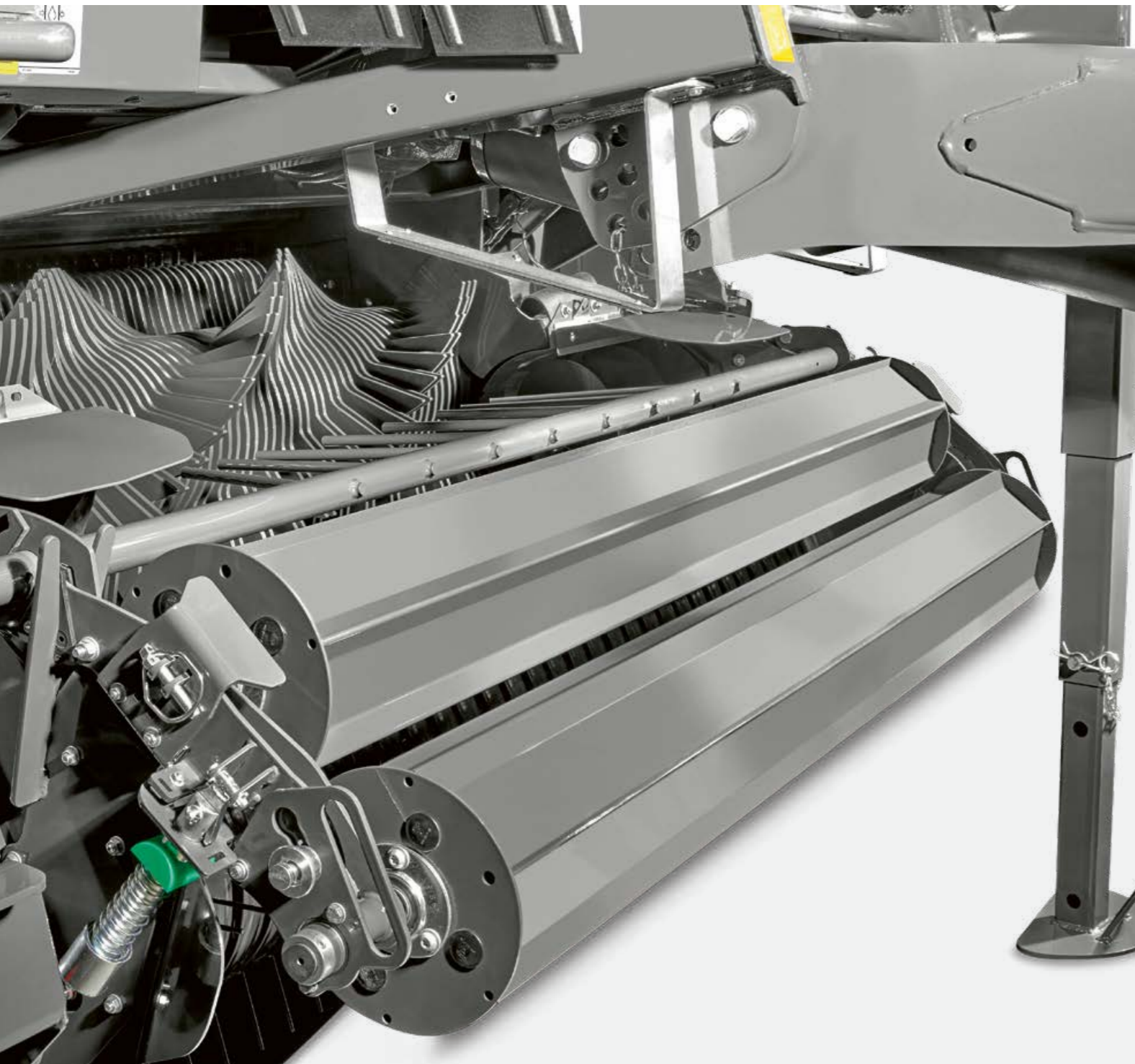
To prepare the way, generously dimensioned lateral stub augers adjust the crop to the bale chamber width. This keeps the bales particularly firm around the edges and makes them extremely robust. The benefit: The bales will withstand rough handling during transport and storage without losing their shape.

At a glance.

- With a working width of 2.10 m, the pick-up easily captures even very wide swaths.
- The ingenious pick-up design and position reduce forage losses and contamination.
- The crop flow remains consistent even in curves and at high speeds.
- The optional single or double roller crop press allows you to increase the throughput rate depending on operating conditions.

Feeder systems.

The right system for each application.



Maximum crop flow output: ROTO FEED.

The rotor blades of the feed rotor are arranged in dynamic helices to ensure uniform intake and efficient throughput. The system is particularly well-suited to delicate types of forage such as alfalfa. The helical arrangement protects crops and produces top-quality forage.

For high-quality milk: ROTO CUT.

The rotor blades of the feed rotor are arranged in dynamic helices to ensure uniform intake and efficient throughput.



Regarding the cutting quality, the solid heavy-duty cutting rotor in the ROLLANT is designed for ultimate performance. It is made of double-hardened boron steel with helical double tines. Individual blade protection prevents damage to the knives, increases their service life and ensures consistent cutting quality. The knives are also available with tungsten carbide coating.

Unique.
The tried and tested ROTO CUT design.



ROTO CUT – short cut.

The ROTO CUT feed system runs at up to 13,800 cuts per minute. Four rows of tines gather in the crop evenly through the knives. The crop is guided exactly over the centre of the blades and cut with precision in the process. A special system of strippers keeps the rotor clean throughout operation. The carefully fine-tuned angle to the feed tines effectively prevents crushing of the crop as it passes through. Uniformly cut slices improve silage quality and facilitate easy distribution both in silage preparation and later on in the feed mixer.

Operational reliability.

The 14, 15, 17 or 25 knives of the knife bank are individually secured. They are spring preloaded and therefore able to avoid foreign objects. Knives that are not affected by foreign matter continue to cut the crop cleanly and reliably for optimum forage quality.

Knives removed in a flash.

When the bale chamber is opened, the knives can be easily installed and removed from above.



**When endurance matters:
ROTO CUT Heavy Duty.**

Tough job to be done? Bring it on! The Heavy Duty drive concept in the ROLLANT makes these machines ideal for tough working conditions in silage. This is because of the 8-mm-thick, four-star dual tines, the ultra-robust individual blade protection and very robust knife bracket. Cutting quality therefore remains excellent even in silage.

What makes ROTO CUT HD so effective:

- ROTO CUT 8-mm tine stars
- Reinforced individual knife protection
- Reinforced Tsubaki chains (main drive and rotor drive)
- Standard or HD knives
- 44 mm or 70 mm length of cut

ROLLANT PRO.

Baling is hard work, and speed is of the essence. This means high daily throughput rates and intelligent systems to help the driver get the job done. These include a floor-lowering function for active adaptation to the crop flow. Automatic lowering by up to 30 mm allows the continuous intake even of irregular swaths, with no impact on cutting quality.

Early warning system helps avoid blockages.

Any unusual floor movement is detected by a sensor and immediately displayed on the control terminal as an optical and acoustic alert. This enables you to respond promptly to any risk of blockage from the comfort of the cab. As a result you can operate the baler right up to its limits without unwanted downtimes from blockages.

Find out how the hydropneumatic PRO cutting frame works.

High pressure with particularly robust steel rollers.



At a glance.

- Up to 4 mm wall thickness
- Flanged design
- Ribbed profile for perfect bale rotation even in wet harvesting conditions
- Continuous, laser-welded baling roller walls for increased stability of the baling roller
- Forged roller stubs to withstand extreme loads



High pressure with particularly robust steel rollers.

For quality forage, crops need to be compacted quickly into high-density bales. In the ROLLANT, this is done with highly robust steel rollers with profile webs, which ensure an active crop feed. Thanks to the web profile, the crop is pressed into firm, round bales with excellent shape retention even in damp conditions. All bearings and drive shafts are designed for this baler's high power and throughput.



Hydraulic pressure control.

The locking mechanism via a hydraulic ram allows the tailgate to adjust to and lightly resonate in line with the increasing pressure from the bale as it increases in size. The bale is able to rotate at all times, and the baling process is neither slowed down nor inhibited in any way.

Opening and closing in record time.

The double-acting hydraulic rams are highly responsive to ensure that you are able to open and close the tailgate extremely speedily from the tractor cab.

A top performer excels when under pressure.



MAXIMUM PRESSURE SYSTEM II for ROLLANT 520 and ROLLANT 540.

- 3-roller segment with two large, adjustable springs
- Excellent value for money for denser bales
- Softer or harder bales as needed
- Perfect bale shape even in difficult conditions

Hydraulic MAXIMUM PRESSURE SYSTEM PLUS for ROLLANT 630 RC UNIWRAP.

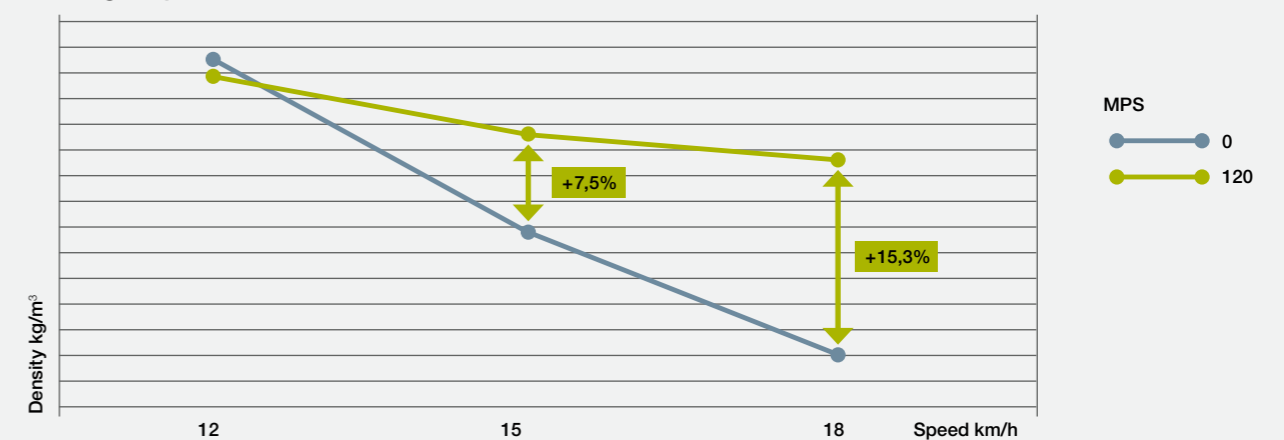
- Pressure adjustment via the CEMIS 700 (60–120 bar)
- Bale fill level indicator
- Optimal bale density
- Thanks to the bale fill level indicator, the last 5 and 10 cm of the bale can remain uncut, as the knives can swing out automatically.

MAXIMUM PRESSURE SYSTEM – MPS.

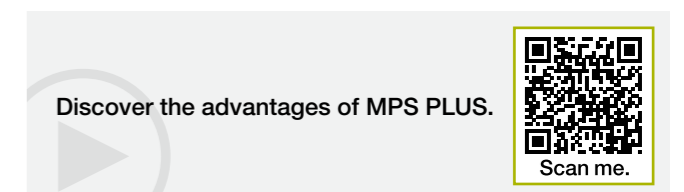
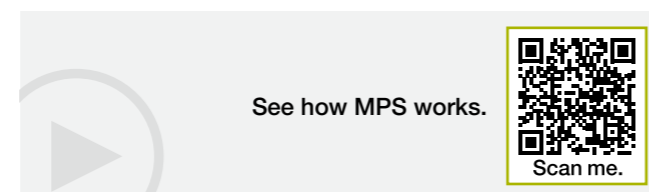
The steel roller bale chamber with MPS is your guarantee of rock-hard bales with high core compaction. That's because of the extra pressure delivered by MPS, the pivoting three-roller segment in the ROLLANT tailgate. At the start of the baling process, the three MPS rollers project into the bale chamber. During the process, the rollers are then pushed up into their end position by the bale as it increases in size.

The benefits for you: The bale rotates right from the start and is compacted already from a diameter of 90 cm. With the pressure freely adjustable from 60 to 120 bar, the end result is perfectly compacted, high-density bales – even at high ground speeds.

Tailgate pressure: 180 bar



Same density with or without MPS PLUS at 12 km/h. With MPS PLUS at 120 bar, the ROLLANT 630 RC UNIWRAP retains density levels even at high speeds. Up to 15.3% greater density with 120 bar in the MPS PLUS compared to bales pressed without MPS PLUS.





Film wrapping.

With the ROLLANT 630 RC UNIWRAP, you can choose to wrap your bales with film rather than net. The pre-stretched film fits particularly tightly around the bale. This means less consumption of material, better sealing of bales and optimum preservation of forage to ensure optimal forage quality.



Wrapping and tying always in view.

Whichever type of wrapping or tying you choose, you always have a clear view of the process. In all ROLLANT models, the wrapping/tying system is directly visible even while driving to make sure you're always on top of the status and progress of the process.



In great shape with the new net wrapping.

Whether twine or net, you'll be sure to get everything right with the ROLLANT models. The new net wrapping system works more reliably than ever and saves a lot of time: wrapping is fully automatic and takes only a few seconds. The sophisticated net guide allows the net to be applied tightly across the full bale width and firmly binds the edges as well. The result is firmly wrapped bales with a good bale shape.



Does even more: the COMFORT version.

The ROLLANT COMFORT allows you to control the number of wraps from the ISOBUS control unit in the tractor cab. As a result, you can respond flexibly to your customers' requirements. The automatic tailgate opening and closing feature is unique to this machine. This additional comfort feature is offered by all ROLLANT 454/455 models (including UNIWRAP) and the ROLLANT 540 COMFORT.



Roll changes are a breeze.

If you wrap your bales with net or film, you need to handle heavy rolls. However, changing rolls is a breeze thanks to the convenient loading bay on any ROLLANT machine.



Your alternative: twine tying.

With twine tying, you have a choice of manual or automatic twine start. The automatic system starts the process once the set final pressure is reached, with the operator receiving a visual and acoustic alert.

The ROLLANT delivers excellent forage quality.





CLAAS introduces the next chapter of the ROLLANT's successful 45-year track record with a new generation of machines. The ROLLANT 520 fixed-chamber baler combines all the benefits of the popular predecessor models ROLLANT 340 and 350. This new baler is very easy to operate, highly versatile and extremely robust.



- 1 2.10-m pick-up
- 2 Feed system optionally with ROTO CUT, ROTO FEED
- 3 Optional net wrapping system
- 4 Optional twine tying system
- 5 Kinematics with reinforced rollers
- 6 Simple bale pressure adjustment
- 7 More space for net rolls or twine reels
- 8 Easy-to-use loading ramp for net rolls
- 9 Chain lubrication as standard
- 10 Control via the CEMIS 700

Modern design.

Smooth crop flow.

Easy unloading.

Constant chain lubrication.

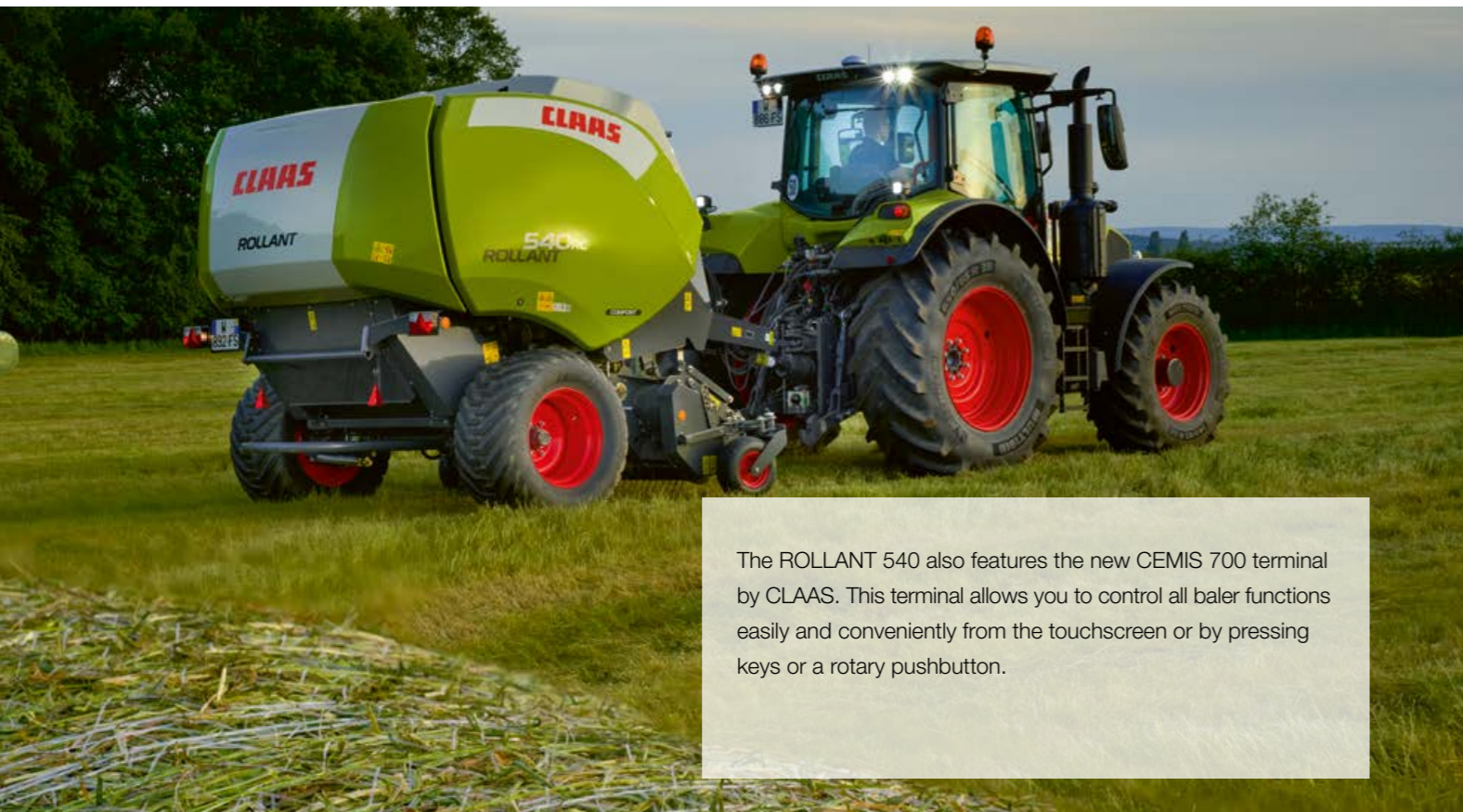


The proven ROLLANT fixed-chamber concept is subject to continuous development and improvement by our engineers. For the new generation, they have revised the design completely. One glance at the new lines makes it clear that this is one of the most robust balers in the world.

The controlled pick-up adjusts to any ground contours, even at high working speeds and while negotiating curves. Large guide wheels with tool-free adjustment keep you safely on track at all times.

Blockages in the intake can be cleared quickly and easily by reversing the rotor mechanically using the rotor lever. The optionally available hydraulic rotor unblocking unit can be activated from the cab and allows the baler to be driven right up to its performance limits without any problems.

The automatic permanent chain lubrication ensures trouble-free use and a long service life. The oil quantity can be adjusted depending on operating conditions.



The ROLLANT 540 also features the new CEMIS 700 terminal by CLAAS. This terminal allows you to control all baler functions easily and conveniently from the touchscreen or by pressing keys or a rotary pushbutton.



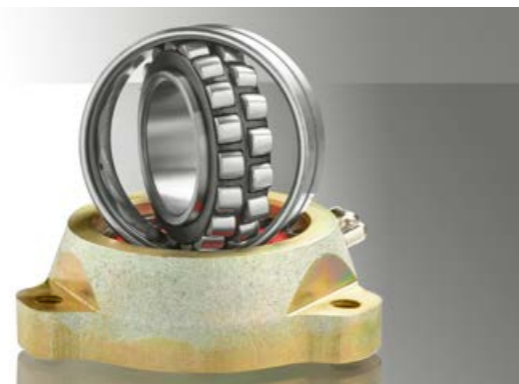
- 1 Bale dimensions 1.22 x 1.25 m
- 2 Controlled 2.10-m pick-up
- 3 ROTO CUT: 15-knife cutting rotor
- 4 Hydraulic knife group activation (0, 7, 8, 15)
- 5 PRO: drop cutting frame for blockage clearance
- 6 Bale chamber with 15 reinforced rollers
- 7 MAXIMUM PRESSURE SYSTEM available as optional equipment
- 8 Shaft diameter for rollers: 50 mm
- 9 Double-row bearing for rollers 2, 3, 10, 15
- 10 1 ¼" rotor drive / 1 ¼" main drive
- 11 2-strand twine tying
- 12 Twine tying / net wrapping
- 13 Comfort net wrapping
- 14 CEMIS 700 with ISOBUS technology

Power-efficient drive concept.

Optimised drive concept.

The most powerful baling rollers on the market.

Even more user-friendly.



All drives are straight and mounted completely on the left-hand side. This allows the power to be transmitted with optimum efficiency. In the ROLLANT 540, only large long-life Tsubaki chains are used, which are lubricated with a constant oil film.

In addition to the rollers, the drive concept of the ROLLANT has been revised. The chains, sprockets and bearings, i.e. all components subject to extreme loads for several hours every working day, have been reinforced. With its larger sprockets and extremely strong cast roller bearing head, the ROLLANT 540 is also ready for heavy crop work.



The CLAAS ROLLANT is the world's top-selling fixed chamber baler. Its proven, robust fixed-chamber concept is continually being enhanced by CLAAS engineers. The ROLLANT 540 features the latest generation of rollers with 15 reinforced rollers, 50-mm drive stubs and extra-robust ball bearings for perfectly formed silage bales and optimum crop flow.



The ROLLANT 540 opens and closes the tailgate automatically in just six seconds once the operator puts the tractor in neutral. The operator's workload is further reduced by the automatic knife cleaning cycle, automatic knife deactivation and convenient knife group activation from the cab.

What should hard work be like?
 Easy as child's play.

Machine operation with the
 CEMIS 700 terminal.

However much you enjoy your work, it shouldn't fill every hour of every day. So every day we do our best to ease your workload, with good ideas, robust equipment and innovative technology. User-friendly, convenient operation and comfort are always our number one focus.



CEMIS 700.

A terminal for even greater comfort.



The CEMIS 700 incorporates three approaches to machine control: a touchscreen function, a rotary pushbutton and keys.

The touchscreen on the CEMIS 700 allows operators to select functions directly by simply tapping on the 7" touchscreen. If it is easier to simply press a key while working in the field, the CEMIS 700 also offers you this option.

Your advantages at a glance:

- New terminal with convenient user navigation and touchscreen
- 7" display with very high resolution
- Two camera inputs



Touchscreen operation.

Use the touch function on the CEMIS 700 to select a function directly by simply pressing the 7" touchscreen.



Ergonomic control terminal.

- Simple control inputs make for easier use on the field
- Can also be operated via a rotary pushbutton and keys, in addition to the touch function
- The proven CLAAS control logic and symbols make this terminal easy to use



Job counter for 20 customers.

Determines important values for increased transparency for your customers:

- Total number of bales
- Number of bales per day
- Total number of chopped bales
- Working time at customer's site



Two camera inputs.

- Connection for two cameras
- Greater convenience and better machine control
- Fewer screens in the tractor cab

Designed for day and night work.

A baler needs to do more than just bale hay and straw. Today's farms have a wide range of requirements in terms of bale size and shape and how the bales are going to be used. CLAAS meets these requirements with its ROLLANT. These fixed-chamber balers with robust drives and reinforced rollers are perfect for your daily work. They also feature a wide range of smart solutions to make them particularly easy to operate and maintain.



Whatever it takes – CLAAS Service & Parts.



CLAAS Service & Parts is always there for you, 24/7.
service.claas.com

The CLAAS Service & Parts product range may vary from country to country.



Specially matched to your machine.

Precision-manufactured parts, high-quality consumables and useful accessories. Choose our comprehensive product range to be certain of receiving exactly the right solution to ensure 100% operational reliability for your machine.



For your business: CLAAS FARM PARTS.

CLAAS FARM PARTS offers one of the most comprehensive ranges of multi-brand parts and accessories for all agricultural applications on your farm.



Global supply.

The CLAAS Parts Logistics Center in Hamm, Germany, stocks almost 200,000 different parts and has a warehouse area of over 183,000 m². This central spare parts warehouse delivers all ORIGINAL parts quickly and reliably all over the world.



Your local CLAAS distributor.

Wherever you are, you can count on us to always provide you with the service and the contact persons you need. Your CLAAS partners are on hand in your local area, ready to support you and your machine around the clock. With know-how, experience, commitment and the best technical equipment. Whatever it takes.

ROLLANT		520 RC	520 RF
Attachment			
PTO shaft speed	rpm	540	540
Single wide-angle drive shaft with freewheel and cam clutch		●	○
Single wide-angle universal drive shaft with shear coupling		●	●
Pick-up			
Width	m	2.10	2.10
DIN pick-up width	m	1.90	1.90
Simple spool valve for raising the pick-up and the knives		●	–
Number of tines per row		32	32
Tine spacing	mm	70	70
Pick-up castor guide wheels		Fixed (oscillating ○)	Fixed (oscillating ○)
Crop feed			
Forced crop feed with		ROTO CUT	ROTO FEED
Number of knives		14	–
Hydraulic connection			
Simple spool valve for raising the pick-up		●	●
Double-acting spool valve for tailgate rams		●	●
Bale chamber			
Number of baling rollers		16	16
MAXIMUM PRESSURE SYSTEM II		○	○
Automatic dual twine wrapping		●	●
Net wrapping ROLLATEX		●	●
Number of twine reels in the twine box		6	6
Number of net rolls		2	2
Adjustable baling pressure on the machine		●	●
Bale ramp		○	○
Automatic chain lubrication		●	●
Bale chamber dimensions			
Width	m	1.20	1.20
Diameter	m	1.25	1.25
Operation			
ISOBUS cable		○	○
CEMIS 700		●	●
Tyres			
11.5/80-15.3 8PR		●	●
15.0/55-17 10PR		○	○
19.0/45-17 10PR		○	○
Running axle		●	●
Dimensions and weights			
Length	m	4.70	4.70
Width	m	2.32-2.57	2.32-2.57
Height	m	2.56-2.57	2.56-2.57
Weight	kg	2500-3500	2500-3500

ROLLANT		540 RC COMFORT	540 RC	540 RF
Attachment				
PTO shaft speed	rpm	540/1000	540/1000	540/1000
Wide-angle drive shaft with cam control		●	●	●
Pick-up				
Working width according to DIN 11220	m	2.10	2.10	2.10
Hydraulic pick-up lift		●	●	●
Ground adaptation via two height-adjustable guide wheels		●	●	●
Fixed guide wheels		–	●	●
Castor guide wheels		○	○	○
Folding castor guide wheels		○	○	○
Feeder system				
Rotor		ROTO CUT	ROTO CUT	ROTO FEED
Knife group activation		0, 7, 8, 15	0, 15	–
Hydraulic connection				
Single-acting spool valve for pick-up lift		●	●	●
Double-acting spool valve for tailgate rams		–	●	●
Single-acting spool valve with pressure-free return + LS		●	–	–
Bale chamber				
Number of baling rollers		15	15	15
MAXIMUM PRESSURE SYSTEM (MPS II)		○	○	○
ROLLATEX net wrapping		–	●	●
Twine/ROLLATEX net wrapping		–	○	○
ROLLATEX COMFORT net wrapping		●	–	–
Bale chamber dimensions	m	1.22 × 1.25	1.22 × 1.25	1.22 × 1.25
Control units				
ISOBUS cable		○	○	○
CEMIS 700		●	●	●
Tyres				
15.0/55-17		●	●	●
19.0/45-17		○	○	○
500/50-17		○	○	○
500/45-22.5		○	○	○
560/45-22.5		○	○	○
Dimensions and weights				
Length	m	4.90	4.90	4.90
Width	m	2.53-2.84	2.53-2.84	2.53-2.84
Height	m	2.66-2.71	2.66-2.71	2.66-2.71
Weight	kg	3350-4300	3350-4300	3350-4300

CLAAS continually develops its products to meet customer requirements. This means that all products are subject to change without notice. All descriptions and specifications in this brochure should be considered approximate and may include optional equipment that is not part of the standard specifications. This brochure is designed for worldwide use. Please refer to your nearest CLAAS distributor and their price list for local specification details. Some protective panels may have been removed for photographic purposes in order to present functions clearly. To avoid any risk of danger, never remove these protective panels yourself. In this respect, please refer to the relevant instructions in the operator's manual.

● Standard ○ Optional □ Available – Unavailable

ROLLANT		630 RC UNIWRAP
Attachment		
PTO shaft speed	rpm	1000
Ball hitch		○
Drive chains		Heavy Duty
Hydraulic connection		
2 x single-acting spool valve and open return line		●
Pick-up		
Width	m	2.10
DIN raking width	m	1.90
Roller crop press		○
Ground adaptation with 2 fixed guide wheels		○
Ground adaptation with 2 castor guide wheels		●
Ground adaptation with 2 folding castor guide wheels		○
Double roller crop press		○
Crop feed		
ROTO CUT Heavy Duty cutting rotor		●
Number of knives		17 (0, 8, 9, 17) 25 (0, 12, 13, 25)
HD knives		○
Blanked-off knives		○
Drop PRO cutting frame		●
Bale chamber		
Number of baling rollers		16
Automatic chain lubrication		●
Automatic central lubrication		●
Bale ejector		–
MAXIMUM PRESSURE SYSTEM PLUS		○
Bale chamber dimensions		
Width	m	1.20
Diameter	m	1.25
Operation		
ISOBUS cable		○
CEMIS 700		●
CEMIS 100		●
Baling		
Net wrapping		●
Film wrapping		○
Wrapper		
Film stretcher	mm	2 × 750
Film capacity		14 rolls
Overlap, configurable	%	52
Pre-stretching	%	67 (82 ○)
Slope equipment		○
Automatic, electric central lubrication PLUS		○
Tyres		
560/60 R 22.5		●
600/55 R 26.5		●
Compressed-air brake system		●
Overall dimensions		
Length	m	7.40
Width	m	2.98
Height	m	3.44
Weight	kg	7400-7475
Options		
Bale twister		○
Load sensing		●
Camera		●
Work lights		○
LED High End work lights		○



CLAAS continually develops its products to meet customer requirements. This means that all products are subject to change without notice. All descriptions and specifications in this brochure should be considered approximate and may include optional equipment that is not part of the standard specifications. This brochure is designed for worldwide use. Please refer to your nearest CLAAS distributor and their price list for local specification details. Some protective panels may have been removed for photographic purposes in order to present functions clearly. To avoid any risk of danger, never remove these protective panels yourself. In this respect, please refer to the relevant instructions in the operator's manual.

● Standard ○ Optional □ Available – Unavailable

Growing together.

Everything we do is focused on you, our customers. We understand your daily challenges. Together with you, we develop agricultural technology that enables you to farm successfully and sustainably, now and in the future. Our digital solutions simplify complex processes and make your work so much more convenient. We want to make you the best in your field.



CLAAS KGaA mbH
Mühlenwinkel 1
33428 Harsewinkel
Deutschland
Tel. +49 5247 12-0
claas.com