



Tractors

NEXOS

F FB VL VE





# Ready for anything. The NEXOS.

## Built with you in mind.

When it comes to narrow-width tractors, customers are very discerning and their needs are highly specific. Since orchards, operators and implements cannot adapt to the tractor, the tractor itself must offer a particularly extensive range of product types, a broad selection of tyres, many equipment options and, last but not least, excellent performance.

However the tractor is used – lifting, cultivating or transporting produce, PTO or hydraulically driven, deployed in orchards or vineyards – it must be capable of meeting any challenge, ready for anything at any time.

To address these requirements, CLAAS has developed the NEXOS series:

- Four variants: F, FB<sup>1</sup>, VL and VE, with minimum overall widths of 1.46, 1.40, 1.26 and 1.00 m, respectively
- Two models, 240 and 230, with 101 and 88 hp
- Hydraulic circuit with a maximum output of 85 l/min

The NEXOS – meets every challenge.



<sup>1</sup> The NEXOS FB is not available in all countries. Please refer to your CLAAS dealer's price list.



An outstanding brand.



CLAAS has many years of experience in the design, manufacture and distribution of harvesting machinery in over 140 countries around the globe; it also offers a comprehensive range of tractors in 57 different models from 75 to 530 hp. Therefore, when developing the NEXOS series CLAAS was able to call on its huge wealth of expertise from the outset. The company's advanced product engineering and production processes and superior durability testing procedures underpin the high standards of quality and reliability of CLAAS products.

Model range and dimensions	6
Hydraulics	8
Engine and PTO	10
Transmission	12
Cab	14
NEXOS FB	16
Maintenance	18
CLAAS Service & Parts	20
<b>Features</b>	<b>22</b>
<b>Specifications</b>	<b>23</b>



# The perfect fit.

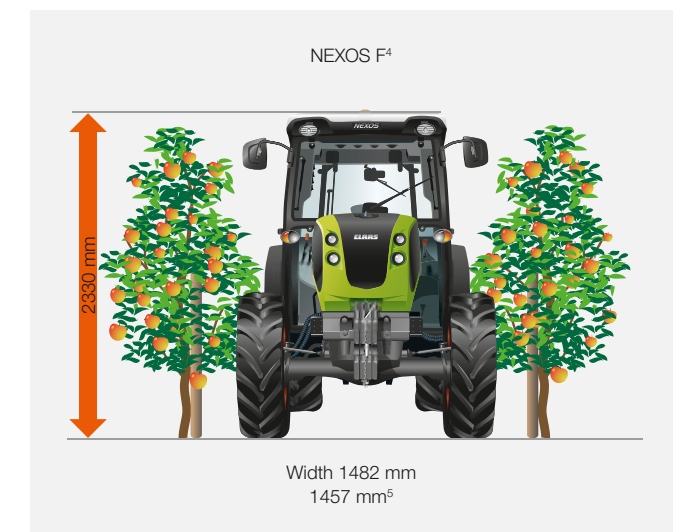
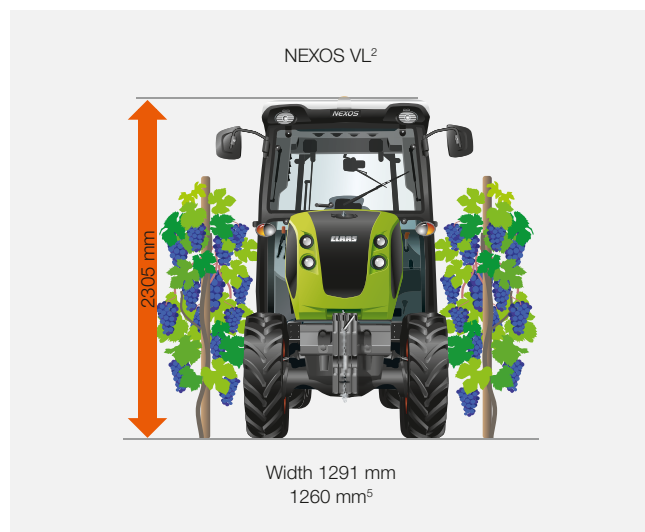
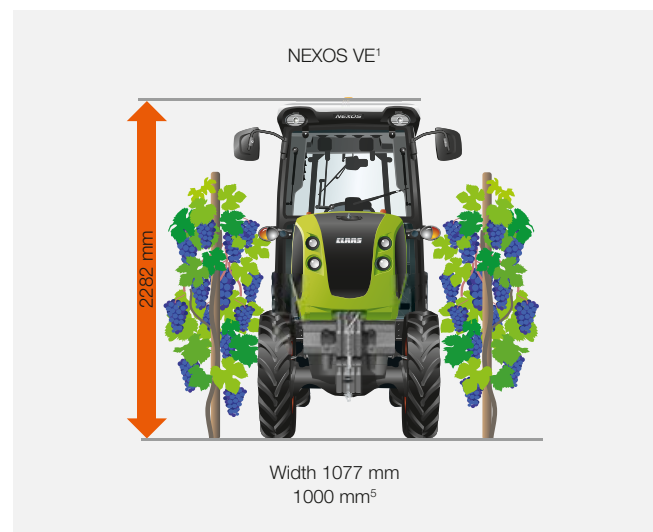


## Spoilt for choice.

With four variants F, FB, VL and VE, a wide selection of tyres and alternative platform or cab configurations, the NEXOS can negotiate any row, orchard or plantation. CLAAS offers a total of 6 models in the NEXOS series, developing 88 to 101 hp with a host of equipment options.

## NEXOS: tailored to your needs.

The basic equipment specification with full mechanical transmission and linkage operation can be further augmented and tailored to your requirements in all NEXOS machines. The REVERSHIFT hydraulic reverser, TWINSHIFT powershift transmission, maximum hydraulic output of 85 l/min, up to four electronic spool valves, a cab with air-conditioning system and active-carbon filter, and the front linkage and front PTO enhance the flexibility and convenience that are characteristic of NEXOS tractors. Configure your very own NEXOS from our huge range of options, perfectly tailored to your every need.



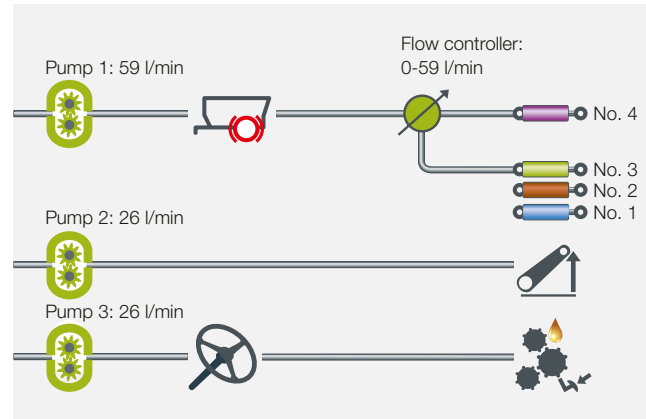
Tyres:

- <sup>1</sup> 9.5 R 28    <sup>3</sup> 380/70 R 20
- <sup>2</sup> 11.2 R 28    <sup>4</sup> 12.4 R 28

<sup>5</sup> Minimum width with rear-wheel drive and platform variant

<sup>6</sup> The NEXOS FB is not available in all countries. Please refer to your CLAAS dealer's price list.





## A range of options.

With its enormous hydraulic output, the NEXOS has been specially engineered for high-intensity operations with attached implements or implement combinations. It comes with two hydraulic pumps as standard. The full 59 l/min from one pump is dedicated to the spool valves and rear linkage. The second pump supplies the steering.

For applications with particularly high hydraulic requirements, the NEXOS can be fitted with a 3-pump hydraulic circuit which achieves a delivery rate of 85 l/min. In this case, the third pump supplies the rear linkage exclusively at a rate of 26 l/min. The steering, spool valves and rear linkage are supplied independently, making it perfectly possible to perform several overlapping functions.



## The power within.

With a maximum lifting capacity of 3.1 t (VE max. 2.6 t) at the ball ends on the rear linkage, the NEXOS can cope with just about any implement. A hydraulic lift rod and hydraulic side stabilisers are available for the VL and F models, providing high-precision implement guidance, particularly over sloping terrain. The rear linkage in both the cab and platform versions of the NEXOS is available with a mechanical or electrohydraulic TCE 6 operating unit. Whether mechanically or push-button operated, the external controls on the mudguards allow safe, rapid implement attachment.



## Mechanical or electronic spool valves.

Your NEXOS can be equipped with up to four mechanical spool valves, including one with flow control. For maximum convenience it can also be fitted with four electronic spool valves which are easy to operate using the ELECTROPILOT joystick and two rocker switches. In the top-end model, eight hydraulic connections are available at the rear of the tractor and six for front-mounted implements.



## Combinations.

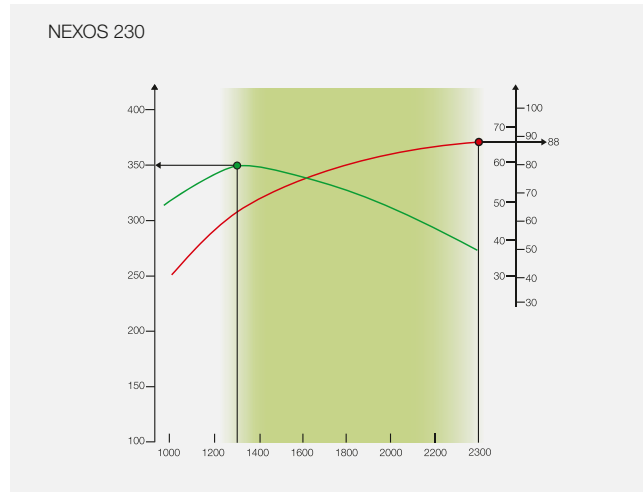
The folding front linkage with integrated front PTO enables various implement combinations to be used and greatly reduces the number of passes. Combined operations reduce time requirements and costs and boost efficiency.



Convenient external controls with mechanical or electronic rear linkage.



# A powerful combination.



## Lively and efficient.

4-cylinder engines with an output of 88 to 101 hp deliver a comfortable driving experience. Modified to the tractor output, the 3.2 litre engine ensures a higher degree of manoeuvrability in smaller models. The 4.5 litre engine in the largest model develops greater output, and offers an extended wheelbase for superior strength and stability. Both engines meet the stringent requirements of the Stage IIIA (Tier 3) exhaust emissions standard, using internal exhaust gas recirculation, turbochargers, charge-air coolers and mechanical injection. The high-torque engines exhibit extremely lively response characteristics, enabling the tractor's full output to be harnessed in all applications, even in difficult terrain.

## The right speed for the job.

A range of PTO speeds is available to ensure that you can access the right engine speed for every job. Maximum PTO speeds are reached at a fuel-efficient, high-torque engine speed of 1,950 rpm. In 540 ECO mode, the full PTO speed is available at 1,650 engine rpm, reducing fuel consumption during light work such as fertiliser spreading.

The product range includes a ground speed PTO for specialist applications. Regardless of the implement attached – for example, a fertiliser spreader or mulcher – the PTO is always engaged very gently, with either hydraulic or electrohydraulic support.



With its extended wheelbase, the NEXOS 240 exhibits particularly impressive tractive power in tillage operations



Electrohydraulic PTO engagement/disengagement

	Cylinders	Cubic capacity	Output at nominal engine speed ECE R 120
NEXOS	Number	cm <sup>3</sup>	kW/hp
240 F, VL	4	4500	74/101
230 F, FB, VL, VE	4	3200	65/88



# Gear shifting the way you like it.



With REVERSHIFT, you can forget about the clutch pedal.



1 REVERSHIFT lever for rapid and comfortable turning manoeuvres, particularly at headlands or when stacking boxes.



2 Clutch button on the shift lever for effortless gear changing.

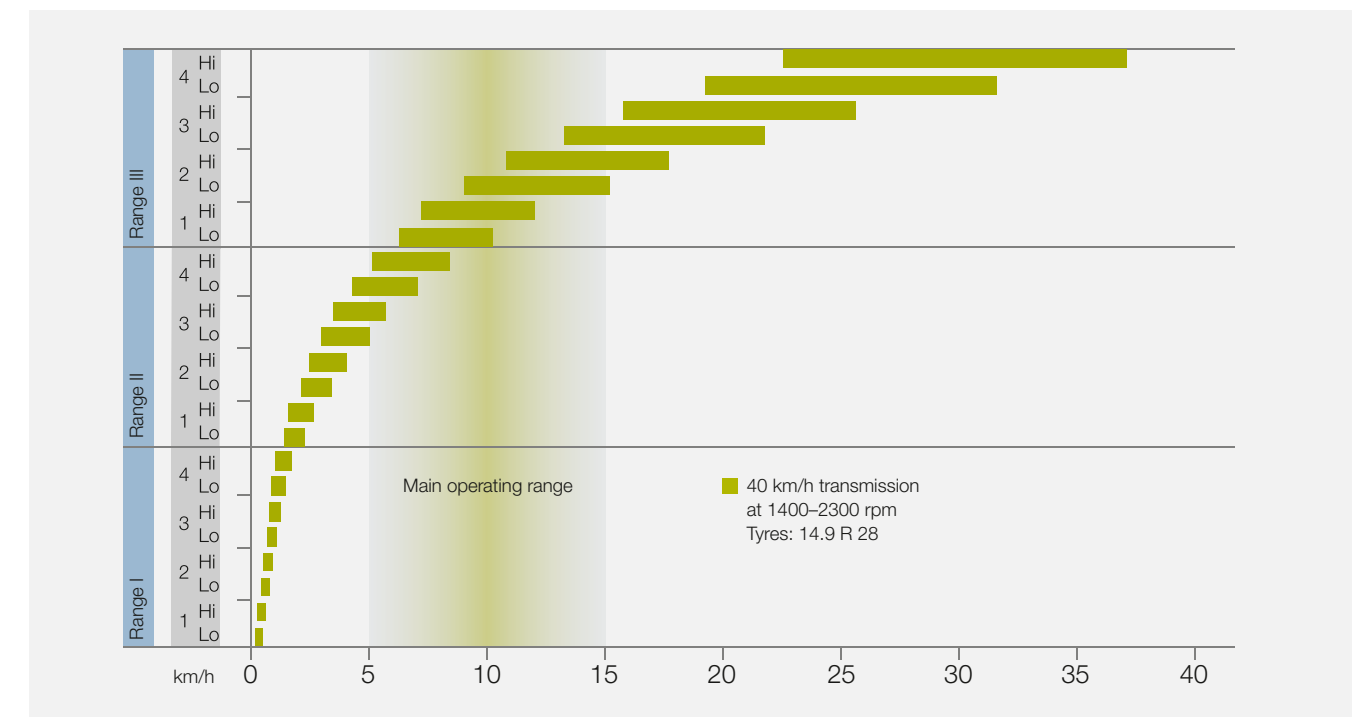
## Choice of four transmission variants.

With four transmission variants to choose from, the NEXOS offers the perfect solution for every user:

- 12F/12R with mechanical reverser
- 24F/24R with mechanical reverser and mechanical splitter
- 24F/24R with mechanical reverser and TWINSHIFT two-stage powershift
- 24F/12R with REVERSHIFT hydraulic reverser and TWINSHIFT two-stage powershift

The 24 gears deliver the ideal speed in all types of operation; for instance, a minimum speed of 340 m/h is possible at rated engine speed. The TWINSHIFT power transmission enables each gear to be selected effortlessly via a push button on the gear knob and without interrupting tractive output or engaging the clutch. All NEXOS transmissions have been engineered to minimise power losses, meaning you benefit from maximum efficiency and reduced fuel consumption.

The all-wheel drive is push-button activated and electrohydraulically engaged. To avoid unnecessary tyre wear, the all-wheel drive is automatically engaged and disengaged at over 14 km/h. It is also automatically engaged when braking to ensure a higher standard of safety on the road. This means that your NEXOS can be safely brought to a standstill at any time.







Compact exterior, spacious interior.

In developing the NEXOS, CLAAS engineers placed huge emphasis on creating a spacious environment for the driver. The cab is very spacious for a tractor of this size and offers generous leg room and a comfortable working environment, even for tall drivers.

The NEXOS boasts an outstanding all-round view, thanks to large glass windows. The large glazed area at the rear of the cab in particular offers an unrestricted view of the attachment and working area.

The ergonomic arrangement of the controls and the clear logic of their allocated functions enables the NEXOS to be operated comfortably and effortlessly throughout long working days. The instrument panel provides clear and concise information about the operating status of the NEXOS, including vehicle speed, engine speed and rear PTO speed, so you know what's happening all the time.



A safe and comfortable ride.

With a choice of cab or platform, the NEXOS is highly versatile in the field. Large, wide-opening doors and a non-slip step make access to the vehicle safe and convenient. The front and rear windows can be opened for natural ventilation, and the powerful air-conditioning unit creates a cool working environment in hot and dusty conditions.

An active carbon filter can be fitted at the factory to protect the operator during crop spraying operations. Together with a well-sealed cab and powerful ventilation system, the filter ensures that the driver is well protected even during intensive crop spraying work.



An air-sprung driver's seat is optionally available for both cab and platform versions. The steering column is also fully adjustable to ensure a comfortable seating position for the driver.



Folding side-marker lights on the NEXOS VE prevent damage to crops



The roll bar can be folded down in no time with no need for tools



# Good things come in small packages. The NEXOS FB.



19 cm lower.

With the NEXOS FB<sup>1</sup>, a version of the existing NEXOS F, CLAAS offers a narrow-width tractor with an extremely low overall height of 1.25 m. The steering wheel is the highest point on the tractor, making it the ideal partner in orchards or low greenhouses.

<sup>1</sup> The NEXOS FB is not available in all countries. Please refer to your CLAAS dealer's price list.



## Outstanding drive train.

The NEXOS 230 FB is highly manoeuvrable thanks to a compact, high-performance 3.2 litre, 4-cylinder engine delivering 88 hp. The NEXOS FB has a 24F/24R transmission with mechanical reverser and splitter. The all-wheel drive and differential lock are activated by pressing a button. On the road, the NEXOS FB reaches a top speed of 40 km/h.



## Customised ergonomics.

Like the other NEXOS models, the FB features excellent ergonomics. Levers, buttons, layout and design have been adapted to the low overall height of the FB version. The functions are still easy to reach and simple to operate, and do not extend beyond the external contour of the NEXOS FB. This prevents damage to orchard fixtures and protects the crop. When driving on public roads or uneven terrain, the roll bar can be raised in just a few seconds.

## Other features:

- 540 / 540 ECO or 540 / 1000 PTO
- Up to three spool valves and 59 l/min hydraulic flow rate with 2-pump circuit
- Tyres up to 380/70 R 24
- Front linkage and front PTO





Short maintenance times.  
Long intervals.



#### Ready in an instant.

When the NEXOS is called upon to give its all in hot, dusty conditions in narrow rows or orchards, everything needs to be right. Daily maintenance work must be as straightforward as possible, since we all know from experience that nobody likes having to face complicated or awkward tasks.

Thanks to its one-piece bonnet, the entire engine compartment can be accessed at the flick of a catch. The air filter is directly accessible, allowing it to be quickly checked and cleaned. The radiator slides out, and the air filter can be removed in no time at all. When required, radiator surfaces can be cleaned quickly and easily, reducing downtime to the absolute minimum.



#### Fresh air.

The cab air filter is easily accessible from the exterior and can be cleaned very quickly to ensure an ongoing supply of fresh air to the cab. All the materials used in the cab are highly robust, resistant to dirt and easy to clean.



#### Easy to maintain.

The NEXOS boasts particularly long maintenance intervals. 500-hour engine oil change intervals reduce downtime and costs. The hinged opening in the bonnet is also extremely convenient and enables the fuel tank to be accessed and filled with ease.



# Whatever it takes. CLAAS Service & Parts.



## Your requirements count.

You can always rely on us: we'll be there whenever you need us. Everywhere. Fast. Reliable. 24 hours a day if necessary. With a complete solution for your machine or business. Whatever it takes.

## ORIGINAL parts and accessories.

Specially matched to your machine: precision-manufactured spare parts, high-quality consumables and useful accessories. We will supply exactly the right solution from our comprehensive product range to ensure that your machine is 100% reliable. Whatever it takes.

## Always quick on the scene.

A tight-knit service network and personal contact partners ensure that we are always easily accessible – from sales staff to technical support and customer service. Whatever it takes.

## Always up to date.

CLAAS dealers are among the most efficient agricultural technology businesses in the world. Our service teams are ideally qualified and equipped with the all-important special tools and diagnostic systems. CLAAS Service stands for high-quality work which meets all your expectations with regard to expertise and reliability. Whatever it takes.

## Planned reliability.

Our service products help you to increase machine reliability, minimise the breakdown risk and base your calculations on predictable costs. CLAAS MAXI CARE offers planned reliability for your machine. Whatever it takes.

## Worldwide coverage from Hamm.

Our central spare parts warehouse delivers all ORIGINAL parts quickly and reliably all over the world. Your local CLAAS partner can supply the right solution for your harvest or your business within a very short time. Whatever it takes.

The CLAAS Parts Logistics Center in Hamm, Germany, stocks more than 155,000 different parts and has a warehouse area of over 100,000 m<sup>2</sup>.





# Packed with impressive features.



## Unrivalled convenience.

- Cab or platform version available
- Cab with air-conditioning system or natural ventilation through opening front and rear windows
- Active carbon filter for additional driver protection during crop spraying
- Large, wide-opening doors and non-slip step for safe and convenient access to the cab
- Optional air-sprung driver's seat
- Adjustable steering column for a comfortable seating position
- Perfect ergonomics thanks to optimum layout of controls
- Large glass windows in the cab for an outstanding all-round view
- Fast, secure implement attachment using external controls on the mudguards

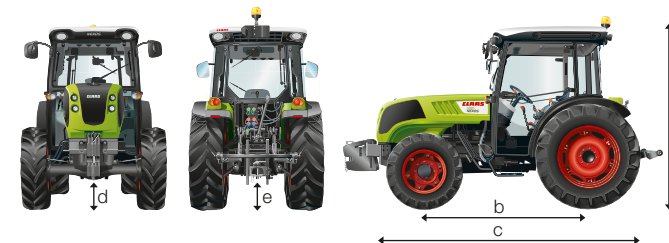
## A range of options.

- Four variants, F, FB<sup>1</sup>, VL and VE, developing 88 to 101 hp
- Hydraulic pump capacity of 59 l/min or optional combined pump capacity of 85 l/min with 3-pump hydraulic circuit
- Fuel-efficient four-cylinder engines
- Three PTO speeds for the perfect speed in any application
- Four transmission variants, optionally with electrohydraulic REVERSHIFT reverser and TWINSHIFT two-stage power-shift transmission
- Wheelbase specially adapted to engine output for high productivity and flexibility
- Front linkage available with optional factory-fitted integrated front PTO
- Max. rear linkage lifting capacity of 3.1 t (VE max. 2.6 t)
- Up to four mechanical spool valves available, including one with flow control
- Option of four electronic spool valves

NEXOS		240 F	230 F	230 FB	240 VL	230 VL	230 VE
<b>Dimensions</b>							
Rear wheels		380/70 R 24	380/70 R 24	380/70 R 20	12.4 R 28	12.4 R 28	9.5 R 28
Front wheels		280/70 R 18	280/70 R 18	260/70 R 16	7.50 R 16	7.50 R 16	6.50 R 16
Height with cab (a)	mm	2330	2330	—	2305	2305	2282
Height with platform (roll bar extended/retracted)	mm	2480/1489	2480/1489	2390/1250	2455/1464	2455/1464	2432/1439
Minimum external width with 2WD and platform	mm	1457	1457	1418 <sup>1</sup>	1260	1260	1000
Minimum external width with 4WD and cab	mm	1482	1482	—	1291	1291	1077
<b>Length</b>							
Wheelbase (4WD) (b)	mm	2161	2074	2074	2185	2098	2098
Overall length (without additional front ballast) (c)	mm	4078	3991	3864	4078	3991	3991
<b>Ground clearance</b>							
Front axle with 4WD (d)	mm	294	294	230	306	306	271
Rear axle (without drawbar) (e)	mm	355	355	210	330	330	295

Tyres for 2WD version		
Rear tyres	Front tyres	VE
13.6 (340/85) R 24	6.00-16	<input type="checkbox"/>
13.6 (340/85) R 24	6.50-16	<input type="checkbox"/>
360/70 R 24	6.00-16	<input type="checkbox"/>
360/70 R 24	6.50-16	<input type="checkbox"/>
9.5 (250/85) R 28	6.00-16	<input type="checkbox"/>
9.5 (250/85) R 28	6.50-16	<input type="checkbox"/>
11.2 (280/85) R 28	6.00-16	<input type="checkbox"/>
11.2 (280/85) R 28	6.50-16	<input type="checkbox"/>
12.4 (320/85) R 28	6.50-16	<input type="checkbox"/>

Tyres for 4WD version						
Rear tyres	Front tyres	F	FB	VL	VE	
380/70 R 20	260/70 R 16	—	<input type="checkbox"/>	—	—	
12.4 (320/85) R 24	6.50-16	—	—	—	<input type="checkbox"/>	
13.6 (340/85) R 24	6.50-16	—	—	—	<input type="checkbox"/>	
13.6 (340/85) R 24	10.0/75 R 15.3	—	—	—	<input type="checkbox"/>	
360/70 R 24	240/70 R 16	—	—	—	<input type="checkbox"/>	
360/70 R 24	280/70 R 16	—	<input type="checkbox"/>	—	—	
380/70 R 24	260/70 R 16	—	—	<input type="checkbox"/>	—	
380/70 R 24	280/70 R 16	—	<input type="checkbox"/>	—	—	
380/70 R 24	280/70 R 18	<input type="checkbox"/>	—	—	—	
420/70 R 24	280/70 R 20	<input type="checkbox"/>	—	—	—	
480/65 R 24	280/70 R 18	<input type="checkbox"/>	—	—	—	
9.5 (250/85) R 28	6.50 R 16	—	—	—	<input type="checkbox"/>	
11.2 (280/85) R 28	6.50 R 16	—	—	—	<input type="checkbox"/>	
12.4 (320/85) R 28	7.50 R 16	—	—	<input type="checkbox"/>	<input type="checkbox"/>	
13.6 (340/85) R 28	7.50 R 16	—	—	<input type="checkbox"/>	<input type="checkbox"/>	
13.6 (340/85) R 28	8.25 R 16	—	—	<input type="checkbox"/>	—	
13.6 (340/85) R 28	280/70 R 18	—	—	<input type="checkbox"/>	—	
360/70 R 28	280/70 R 16	—	—	—	<input type="checkbox"/>	
380/70 R 28	280/70 R 20	<input type="checkbox"/>	—	—	—	
14.9 (380/85) R 28	7.50 R 18	—	—	<input type="checkbox"/>	—	
14.9 (380/85) R 28	280/70 R 18	—	—	<input type="checkbox"/>	—	
380/85 R 28	9.5 R 20	<input type="checkbox"/>	—	—	—	
420/70 R 28	280/70 R 18	—	—	<input type="checkbox"/>	—	
420/70 R 28	260/80 R 20	<input type="checkbox"/>	—	—	—	
420/70 R 28	300/70 R 20	<input type="checkbox"/>	—	—	—	
420/70 R 28	320/70 R 20	<input type="checkbox"/>	—	—	—	
480/65 R 28	320/70 R 20	<input type="checkbox"/>	—	—	—	



<sup>1</sup> The NEXOS FB is not available in all countries. Please refer to your CLAAS dealer's price list.

<sup>1</sup> Min. external width with 4WD and platform



NEXOS		240 F-VL	230 F-FB-VL-VE
<b>Engine</b>			
Manufacturer		FPT	FPT
Number of cylinders / intake		4/TI	4/TI
Cubic capacity	cm <sup>3</sup>	4500	3200
Nominal engine speed	rpm	2200	2300
Output at nominal engine speed (ECE R 120) <sup>1</sup>	kW/hp	74/101	65/88
Engine speed at max. torque	rpm	1250	1300
Max. torque	Nm	430	350
Viscous fan		●	●
Max. fuel tank capacity	l	75	75 (FB: 67)
Auxiliary fuel tank in VL and F	l	19	19
Oil-change interval	h	500	500
Top exhaust		○	○
Bottom exhaust		●	●

NEXOS		240 F	230 F	230 FB	240 VL	230 VL	230 VE
<b>Transmission</b>							
Top speed	km/h	40/30	40/30	40	40/30	40/30	40/30
12F/12R with mechanical reverser and 30 km/h transmission		□	□	–	□	□	□
24F/24R with mechanical reverser, mechanical splitter and 30 or 40 km/h transmission		□	□	□	□	□	□
24F/24R with mechanical reverser, TWINSHIFT two-stage powershift and 30 or 40 km/h transmission		□	□	–	□	□	□
24F/12R with REVERSHIFT hydraulic reverser, TWINSHIFT two-stage powershift and 30 or 40 km/h transmission		□	□	–	□	□	□
Min. speed with 12F/12R transmission at nominal engine speed	km/h	1.25	1.25	–	1.25	1.25	1.20
Min. speed with all transmissions except 12F/12R at nominal engine speed	km/h	0.36	0.36	0.36	0.36	0.36	0.34

<b>PTO</b>							
Clutch type depending on option		Mechanically / hydraulically supported					
540/1000 rpm		○	○	○	○	○	○
540/540 ECO rpm		●	●	●	●	●	●
Ground speed PTO		○	○	○	○	○	○

<b>Road safety</b>							
Braking system (multiple discs in oil bath and automatic 4WD activation)		●	●	●	●	●	●
Hydraulic trailer braking system		●	●	●	●	●	●

<b>4WD front axle<sup>2</sup></b>							
Electrohydraulic operation		●	●	●	●	●	●
Differential locks front / rear (self-locking multi-disc clutch at front / dog clutch at rear)		●	●	●	●	●	●
Max. steering angle	degrees	52	52	52	54	54	55
Castor angle	degrees	6	6	6	10	10	10
Angle of oscillation	degrees	8	8	8	8	8	6
Turning radius	m	3.76	3.66	3.66	3.75	3.64	3.55
With external width	mm	1482	1482	1482	1291	1291	1077

<sup>1</sup> Values correspond to permissible values in accordance with 97/68/EC, ISO TR 14396 or 2000/25/EC.

<sup>2</sup> Rear wheel drive available for 230 VE only

● standard ○ optional □ available – not available

NEXOS		240 F	230 F	230 FB	240 VL	230 VL	230 VE
<b>Hydraulic system</b>							
Engine speed at max. hydraulic pump output	rpm	2200	2300	2300	2200	2300	2300
Hydraulic pump output for steering, brakes and own requirements	l/min	25	26	26	25	26	26
Max. operating pressure	bar	190	190	190	190	190	190
2-pump hydraulic circuit		●	●	●	●	●	●
Hydraulic pump output for rear linkage and spool valves	l/min	57	59	59	57	59	59
Max. operating pressure	bar	190	190	190	190	190	190
3-pump hydraulic circuit		○	○	–	○	○	○
Hydraulic pump output for spool valves	l/min	57	59	–	57	59	59
Hydraulic pump output for rear linkage	l/min	25	26	–	25	26	26
Max. operating pressure	bar	190	190	–	190	190	190
Number of mechanical spool valves (min.–max.)		2-4	2-4	2-3	2-4	2-4	2-4
Three or four electronic spool valves, two of which are joystick-controlled		○	○	–	○	○	○
Flow control on all electronic spool valves		●	●	–	●	●	●

<b>Rear linkage</b>							
Max. lifting capacity at ball ends	kg	3160	3160	2610	3160	3160	2610
Continuous lifting power at ball ends	kg	2160	2160	1730	2160	2160	1730
External rear linkage operation		○	○	○	○	○	○
TRACTO CONTROL ELECTRONIC (TCE 6)		○	○	–	○	○	○
Hydraulic lift rod		○	○	○	○	○	–
Hydraulic side stabilisers		○	○	–	○	○	–

<b>Front linkage</b>							
Front linkage		○	○	○	○	○	○
Max. lifting capacity at ball ends	kg	2800	2800	2800	2800	2800	2800
Front PTO 1000 rpm		○	○	○	○	○	○

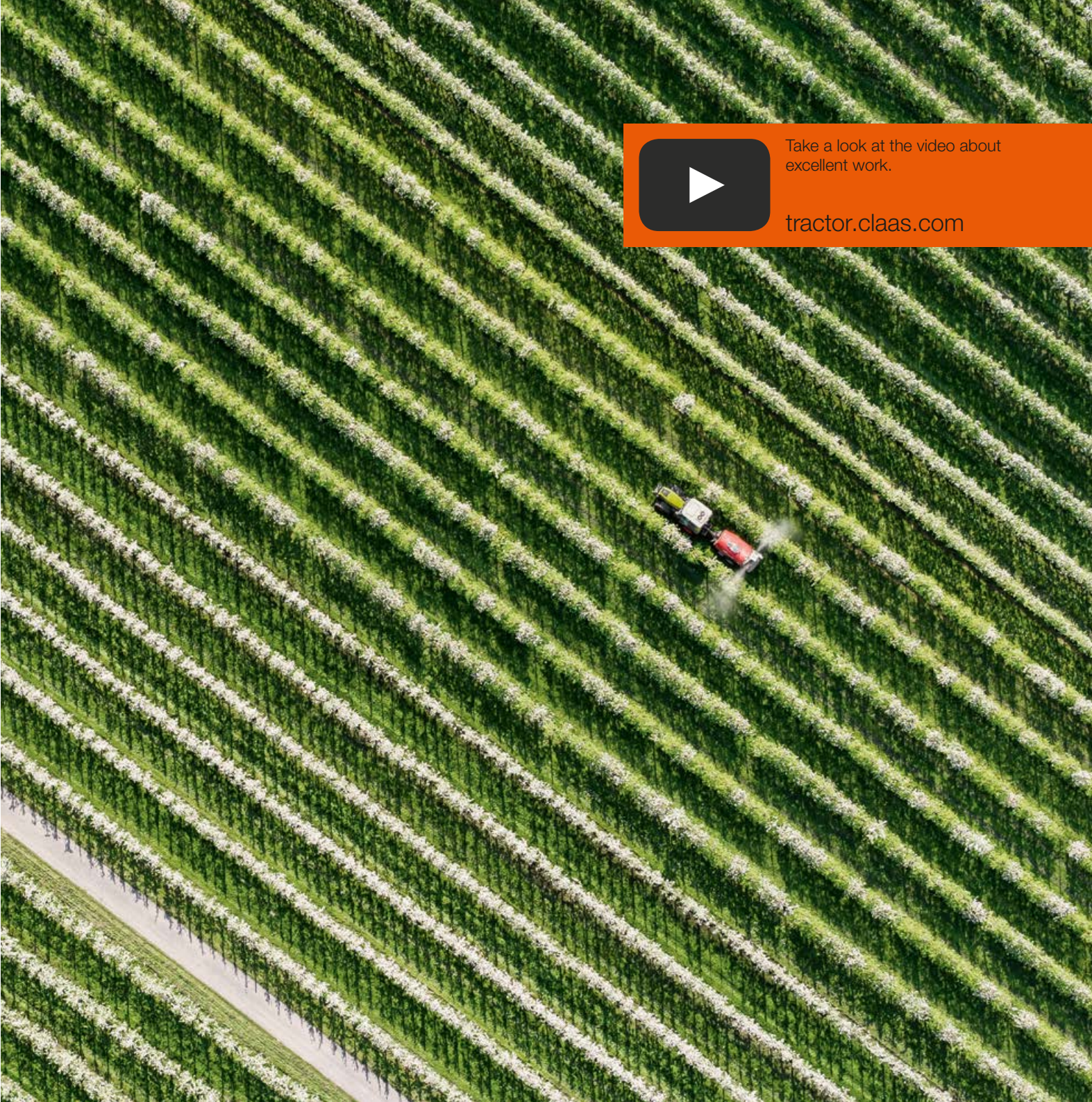
<b>Cab</b>							
Cab / platform		□/□	□/□	–/□	□/□	□/□	□/□
Driver's seat, mechanical suspension		●	●	●	●	●	●
Driver's seat, air suspension		○	○	–	○	○	○
Steering column, height and angle adjustable		□	□	–	□	□	□
Heating		●	●	–	●	●	●
Air conditioning		○	○	–	○	○	○
Opening rear window		●	●	–	●	●	●
Opening front window		●	●	–	●	●	●
Rear window wiper		○	○	–	○	○	○
Max. number of work lights		2 front / 2 rear	2 front / 2 rear	1 rear	2 front / 2 rear	2 front / 2 rear	2 front / 2 rear

<b>Weight (4WD, standard tyres, with oil and fuel, without driver)</b>							
Rear wheels		14.9 R 28	14.9 R 28	380/70 R 20	14.9 R 28	14.9 R 28	13.6 R 28
Front wheels		320/70 R 20	320/70 R 20	260/70 R 16	7.50 R 18	7.50 R 18	7.50 R 16
Weight without ballast (platform / cab)	kg	2965/3200	2895/3130	2595	2795/3110	2725/3040	2595/2810
Max. front ballast without front linkage	kg	250	250	250	250	250	250
Permissible gross weight	kg	4400	4400	4200	4400	4400	4100

CLAAS continually develops its products to meet customer requirements. This means that all products are subject to change without notice. All descriptions and specifications in this brochure should be considered approximate and may include optional equipment that is not part of the standard specifications. This brochure is designed for worldwide use. Please refer to your nearest CLAAS dealer and their price list for local specification details. Some protective panels may have been removed for photographic purposes in order to present the function clearly. To avoid any risk of danger, never remove these protective panels yourself. In this respect, please refer to the relevant instructions in the operator's manual. All technical specifications relating to engines are based on the European emission regulation standards: Stage. Any reference to the Tier standards in this document is intended solely for information purposes and ease of understanding. It does not imply approval for regions in which emissions are regulated by Tier.

● standard ○ optional □ available – not available





Take a look at the video about excellent work.

[tractor.claas.com](http://tractor.claas.com)

Excellent work. Tractors from CLAAS.

CLAAS KGaA mbH  
Mühlenwinkel 1  
33428 Harsewinkel  
Deutschland  
Tel. +49 5247 12-0  
[claas.com](http://claas.com)